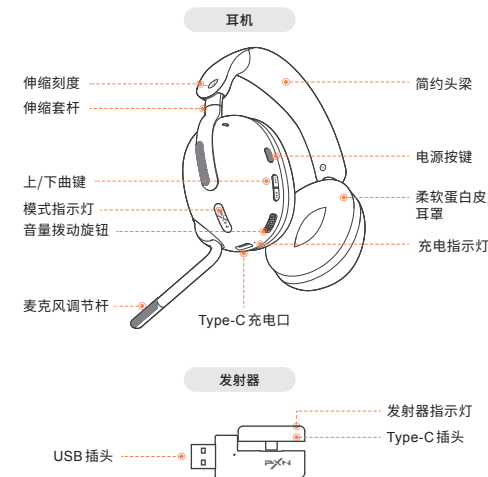
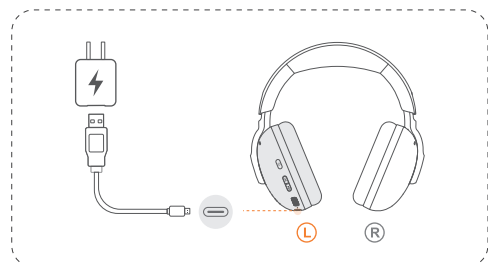


感谢您对PXN莱仕达的选择和支持,在使用前请仔细阅读本手册。

### 01 - 产品外观



### 02 - 耳机充电



### 03 - 开/关机



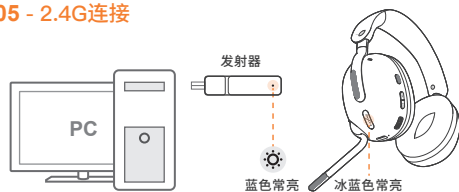
长按“ 电源键”约3秒开机,耳机模式指示灯亮。  
长按“ 电源键”约3秒关机,耳机模式指示灯熄灭。

### 04 - 2.4G/蓝牙模式切换



如果在蓝牙模式中,正在播放音乐,则要先按下“ 电源键”,让音乐暂停后才能双击“ 电源键”切换到2.4G模式。

### 05 - 2.4G连接



将发射器插入到PC、主机或者手机等设备后,耳机开机后自动进行连接;连接成功会提示“已连接”,发射器指示灯蓝色常亮,耳机模式指示灯冰蓝色常亮。

### 06 - 蓝牙连接



耳机切换到蓝牙模式时(双击电源键),自动进入配对模式,会听到提示音“配对中”。而后在手机设备配对列表中找到“Ravine”点击连接,连接成功后会提示“已连接”,耳机模式指示灯蓝色常亮。

### 07 - 强制配对



连接一台设备使用超过5分钟后,若需要再连另一台设备,可通过连续4击(1.5秒内)上曲键可清除原有的配对信息,进入重新配对状态。

### 08 - 耳机佩戴



### 09 - 按键功能

主控功能	按键说明	手势
开机	关机状态长按电源键	3s
关机	开机状态长按电源键	3s
播放/暂停	单击电源键	x1
接听/挂断电话	单击电源键	x1
拒接电话	长按电源键	1s
上一曲	单击上曲键	x1
下一曲	单击下曲键	x1
音量加减	向上拨动音量旋钮增加 向下拨动音量旋钮减小	+ -
音乐音效 影院音效 游戏音效	双击下曲键 切换一种音效	x2
强制进入配对	连续4击(1.5s内)上曲键 听到提示音即可	x4 (1.5s)
LED灯开/关闭	长按下曲键关闭 再次长按开启	2s
麦克风开/关闭	向下打开/收回关闭 听到提示音即切换	
充电	插入Type-C数据线充电 支持边充电边听	
电量低提示	10%低电量时 耳机每60s语音提示	
断开功能	5分钟未连接设备 耳机自动关机	
USB声卡功能	将数据线插入耳机Type-C口, 另一端插入PC的USB口, 转换为USB声卡模式, 耳机按键可以控制PC播放器	

### 10 - 产品参数

产品名称	Ravine
蓝牙版本	蓝牙5.3
蓝牙协议	A2DP AVRCP HFP HSP
音频解码	SBC、AAC
驱动器	40mm 复合膜动圈喇叭
频率响应	20Hz - 20KHz
灵敏度	94dB
有效距离	10m (无障碍空旷环境)
电池类型	锂离子聚合物电池
电池容量	550mAh
输入电压	5V/ 500mA
充电接口	Type-C
充电时长	1.5H
续航时长	蓝牙模式 约62H (关灯) 约35H (开灯) 2.4G模式 约44H (关灯) 约32H (开灯)

### 11 - 注意事项

请勿长时间高音量使用耳机,如出现耳鸣、耳痛等现象,应立即停止收听。  
请勿在驾驶机动车时使用本产品。  
请勿在雷雨天气使用本产品,以免导致产品出现故障或电击危险。  
请将本产品远离儿童和宠物放置,以免误吞导致窒息危险。

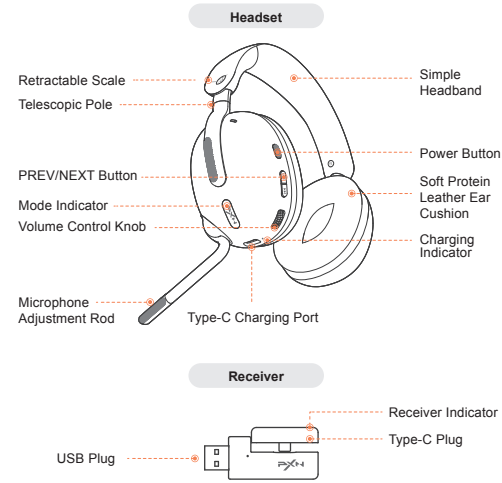
**警告:** 本产品的可充电电池必须妥善处理,以便回收利用;请勿将电池投入火中,以免引起爆炸。

建议: 每个月给产品充满电一次,保持产品电池的性能。

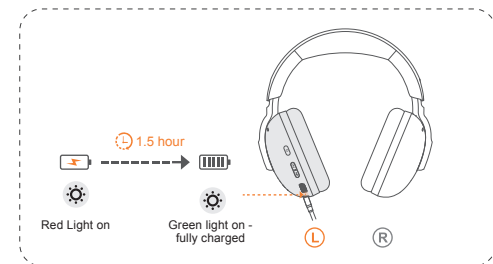
## Wireless Gaming Headset 无线游戏耳机

Thank you for choosing and supporting PXN, please read this manual carefully before starting to enjoy your gaming experience.

## 01 - Product Overview



## 02 - Headset Charging

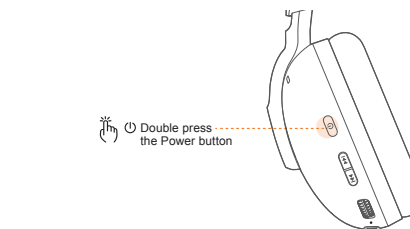


## 03 - Power ON/OFF



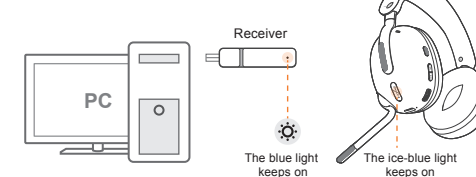
Hold and press the "⏻ Power button" for about 3 seconds to turn it on, the Mode Indicator on.  
Hold and press the "⏻ Power button" for about 3 seconds to turn it off, the Mode Indicator off.

## 04 - 2.4G/BT Mode Switching



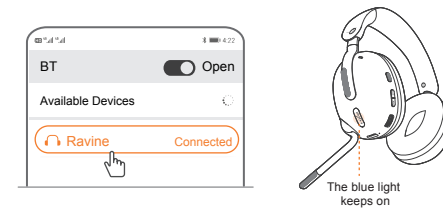
If playing music in BT mode, you must first press the "⏻ Power button" to pause the music before double pressing the "⏻ Power button" to switch to the 2.4G mode.

## 05 - 2.4G Connection



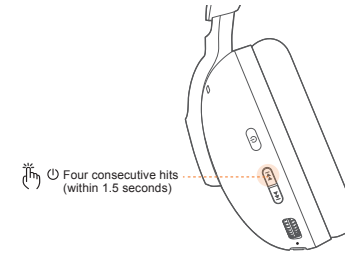
After plugging the receiver into the PC, game console, or mobile device, the headset will automatically connect after turning it on. Once successfully, you will hear the prompt "Connected" and the blue light on the receiver will remain on. The ice-blue indicator on the headset will stay on.

## 06 - BT Connection



When switching the headset to BT mode (double-clicking the Power button), it will automatically enter pairing mode, and you will hear a prompt "Pairing". Then check the BT pairing list on your phone and find "Ravine" for connection. Once successfully, you will hear the prompt "Connected" and the blue mode indicator will stay on.

## 07 - Forced Pairing



After using the headset with one device for more than 5 minutes, if you need to connect the headset to another device, you can clear the existing pairing information by pressing the PREV button four times consecutively (within 1.5 seconds). This will enter them into pairing mode for reconnection.

## 08 - How to Wear



## 09 - Button Functions

Main Control Functions	Button Functions	Gesture
Power ON	Press and hold the power button when the headset is under OFF state.	⏻ 3s
Power OFF	Press and hold the power button when the headset is under ON state.	⏻ 3s
Play/Pause	Press the power button once	⏻ x1
Answer/Hang up calls	Press the power button once	⏻ x1
Reject calls	Hold and press the power button for 1 seconds	⏻ 1s
PREV Button	Press the PREV Button once	⏪ x1
NEXT Button	Press the NEXT Button once	⏩ x1
Volume up/down	Moving the volume knob upwards to increase the volume. Moving the volume knob downwards to decrease the volume.	⏮ + ⏭ -
Music Sound Effects Cinema Sound Effects Gaming Sound Effects	Double-press the "NEXT button" to switch the sound effects.	⏩ x2
Forced Pairing	Press the PREV button for 4 consecutive times (within 1.5 seconds). Upon hearing the prompt, it indicates successful forced pairing.	⏪ x4 (1.5s)
LED light on/off	Long press the NEXT button to turn off. Long press again to turn on.	⏩ 2s
Microphone ON/OFF	Pull down to turn on/ Retract to turn off, switch successfully when hearing the prompt tone.	
Battery Charging	Insert the Type-C data cable for charging. Supports charging while listening.	
Low Battery Warning	When the battery level is at 10%, the headphones will provide a voice prompt every 60 seconds.	
Disconnect Function	The headphones will automatically power off if not connected to a device for 5 minutes.	
USB Sound Card Function	Insert the data cable into the Type-C port of the headphones, and plug the other end into the USB port of the PC to switch to USB sound card mode. The headphone buttons can control the PC player.	

## 10 - Product Specifications

Product Name	Ravine
BT Version	BT 5.3
BT Protocol	A2DP AVRCP HFP HSP
Audio Decoding	SBC, AAC
Driver	40mm composite diaphragm dynamic speaker
Frequency Response	20Hz-20KHz
Sensitivity	94dB
Effective Range	10m (obstacle-free open environment)
Battery Type	Lithium battery
Battery Capacity	550mAh
Input Voltage	5V/500mA
Charging Interface	Type-C
Charging Time	1.5 hour
Battery Life	BT mode: about 62 hours (with lights off), about 35 hours (with lights on) 2.4G mode: about 44 hours (with lights off), about 32 hours (with lights on)

## 11 - Attentions

Avoid using the headphone at a high volume for a long time. If tinnitus or earache occurs, please stop using.  
Do not use this product while driving a motor vehicle.  
Avoid using this product during thunderstorms or rainy weather to prevent potential product malfunctions or electrical hazards.  
Keep this product out of reach of children and pets to prevent accidental swallowing and potential choking hazards.

⚠ Warning: The rechargeable battery of this product must be properly handled for recycling purposes. Do not dispose of the battery in a fire, as it may cause an explosion.

Suggestion: It is recommended to fully charge the product once a month to maintain the battery performance of the product.