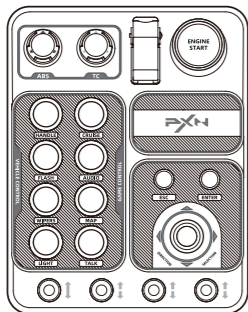




CB1



CONTROL BOX

— User Manual —

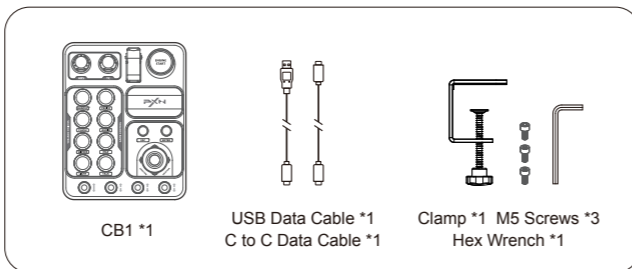
EN

Thank you for choosing and supporting PXN, please read this manual carefully before starting to enjoy your gaming experience.

01 Platform Support

Supported Platform: PC
PC System Requirements: Windows 7/ 8/ 10/ 11

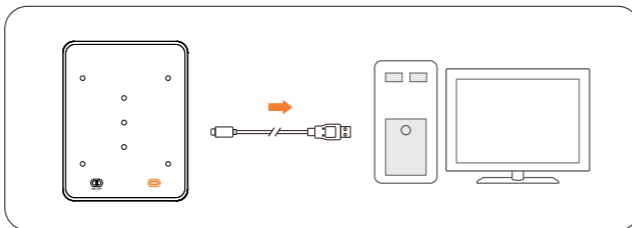
02 Product List



03 Usage Instructions

• PC Connection

Use the USB data cable to connect the CB1 to the computer for use.



01 - English

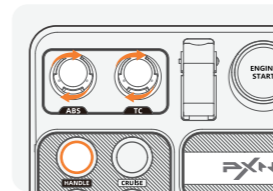
• RGB Light Power Switch

Toggle the RGB light power switch on the back of the CB1 to turn the RGB lights on or off.



• RGB Light Color Switching

Hold the HANDLE button and rotate the ABS knob to cycle through 7 RGB light colors.



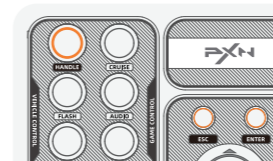
• RGB Light Brightness Adjustment

Hold the HANDLE button and rotate the TC knob. Rotate clockwise to increase brightness, counterclockwise to decrease brightness.

• Mapping Button On/Off

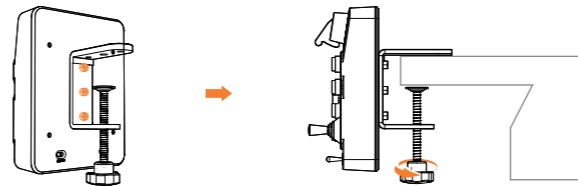
The ESC/ENTER buttons are mapped to the ESC/ENTER keys on the keyboard by default.

Hold the HANDLE button and press the ESC/ENTER button to disable mapping. Repeat the operation to enable it.



• Accessory Installation

- Step 1 Use the M5 hex screws to attach the clamp to the CB1.
- Step 2 Place the CB1 on the table and tighten the clamp.



02 - English

04 Product Specifications

Model	CB1
Connection Method	Wired connection
Operating Voltage	5V
Operating Current	Maximum 300mA
Package Dimensions	About 231 * 241 * 120 mm
Product Dimensions	About 184 * 144 * 78.5 mm
Product Weight	About 540 g
Operating Temperature	10~40°C
Operating Humidity	20~80%

⚠ Warnings

- Please read the manual carefully before operation.
- Avoid strong vibrations and heavy impacts.
- Do not disassemble, modify, or repair the product yourself.
- Prevent water or other liquids from entering the product to avoid damage.
- Avoid storing in humid, high-temperature, or smoky environments.
- When connecting or removing the product, apply appropriate force.
- Children should use this product under adult supervision.

03 - English